

Installation Instruction for AutoCAD - Win (Student install from Software Repository)

395 Faye Buckley August 9, 2016 [Installation Documentation](#)

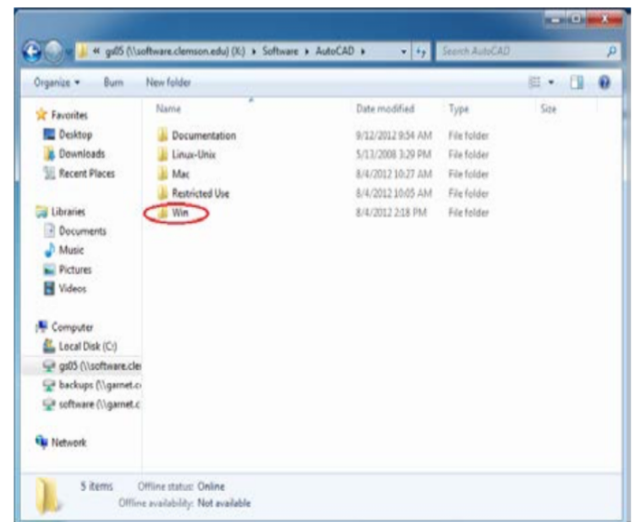
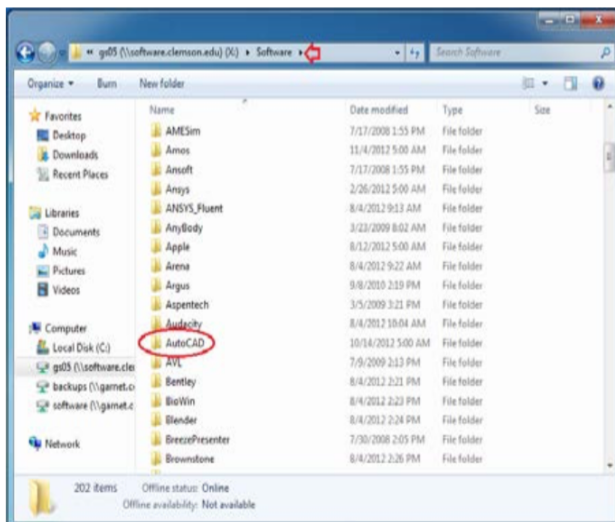
Installation Instruction for AutoCAD (Student install from Software Repository)

12/11/2014 G. Craig

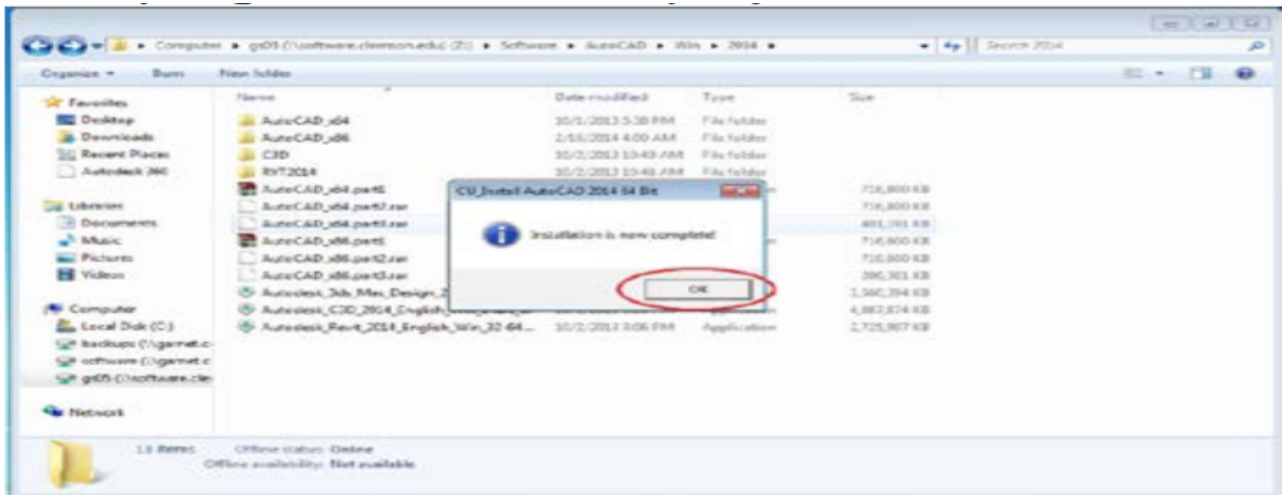
STUDENTS Please Note:

If you attempt this over a wireless connection it could take well over an hour (or longer) to install. Install using a wired Ethernet connection for best results. You might have to Net Reg your wired connection if you have never used a wired connection before. Disable your wireless when using wired Ethernet to eliminate conflict.

Log on to Software Repository - software.clemson.edu/software with your network Userid/Password. Then open the AutoCAD folder. Open the Win folder.



Open the 2015 folder. Select the Application that corresponds to your operating system *If you are unsure click on Start, right click on Computer, click on Properties.* For the purpose of this document, 64 bit will be demonstrated. . Double click on **AutoCad_x64 part1 Application**.



AutoCAD is installed.

Installation instructions provided by **Engineering IT Support**. Please send all comments regarding errors or clarity of this document to: coes_pcadmins@lists.clemson.edu 142 Freeman Hall (864) 656-2720

Online URL: <https://hdkb.clemson.edu/phpkb/article.php?id=395>