

Manually Connecting to your Home Directory (U: Drive) – Windows Command Line

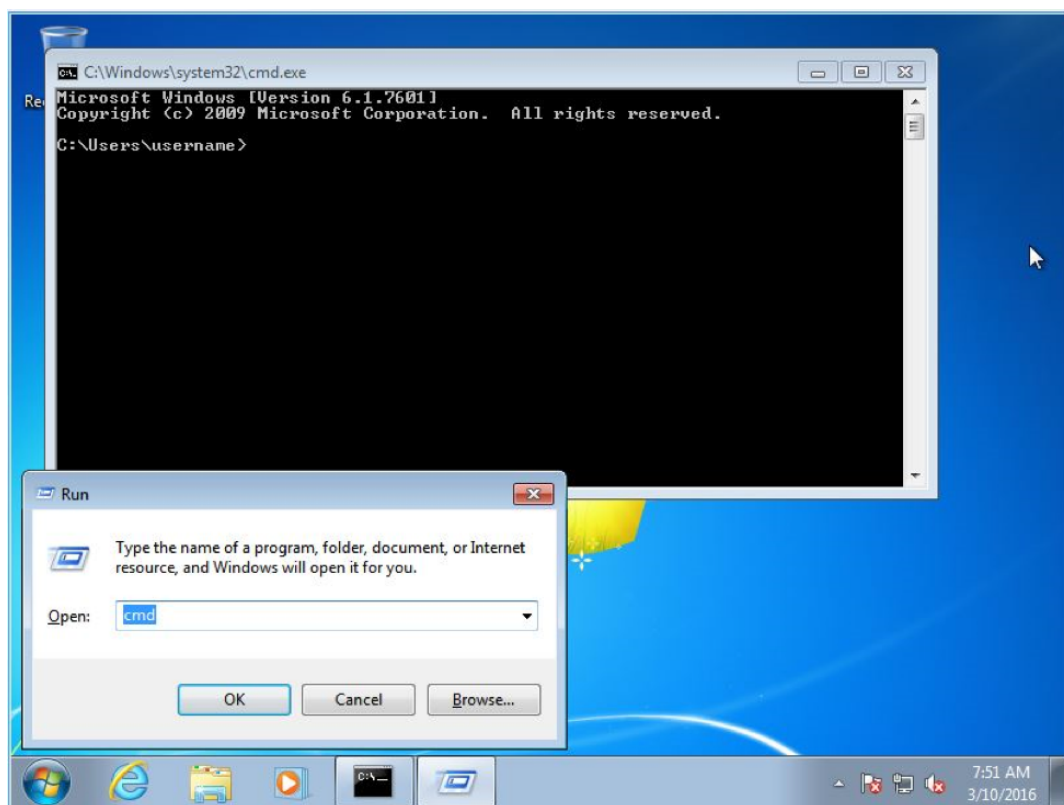
347 Faye Buckley June 22, 2022 [Web Systems, Servers, Hosting & Data Storage](#), [Working with Files](#)

MANUALLY COMMECTING TO YOUR HOME DIRECTORY - WINDOWS COMMAND LINE

Note: Off campus users will need to connect to the Clemson VPN service before following instructions.

Note: Command line instructions work the same across 7, 8.1, 10, and 11.

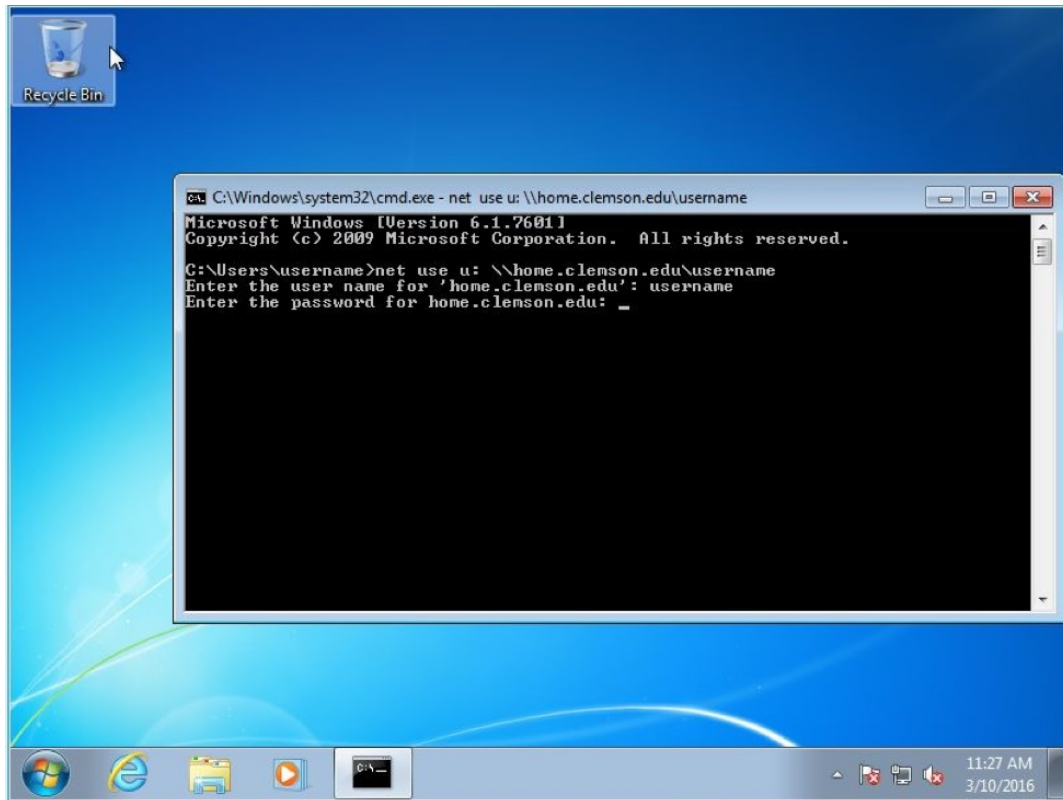
- Open a Command Prompt window by pressing the “**Windows Key**” + “**R**” to bring up the Run Command window then type in “**cmd**” then click the “**OK**” button.



- At the Command Prompt, type the full command line:

net use u: \home.clemson.edu[USERNAME]

Where [USERNAME] is your university username. Press the **Enter** key.



- Enter your username and password when prompted. If successful, you will be notified that the command completed successfully.
- Verify in the Windows File Explorer that the drive mounted by clicking on “**Windows File Explorer**” button on the taskbar.

[Click here for an article on mapping the U: drive.](#)

For more information, email ITHELP@clemson.edu or call 864-656-3494.

Online URL: <https://hdkb.clemson.edu/phpkb/article.php?id=347>