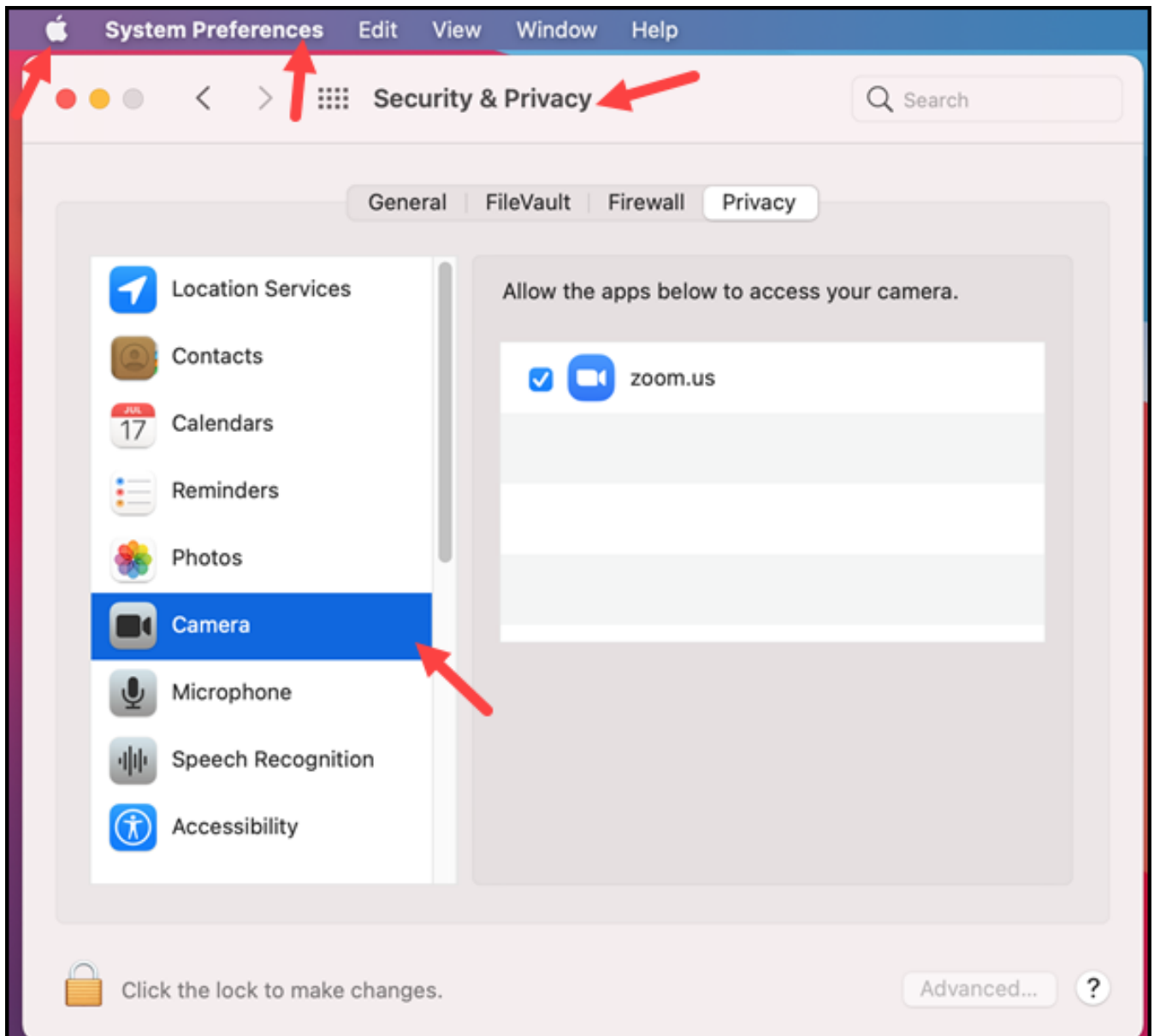


Camera Settings on a Mac

1879 Laurie Sherrod April 27, 2022 [Teaching & Learning](#)

If you are having trouble using the camera on a Mac for video conferencing, here are some tips on finding the camera settings on a Mac.

MAC -> System Preferences -> Security & Privacy -> Privacy tab -> Camera -> Select Apps to allow access to camera.



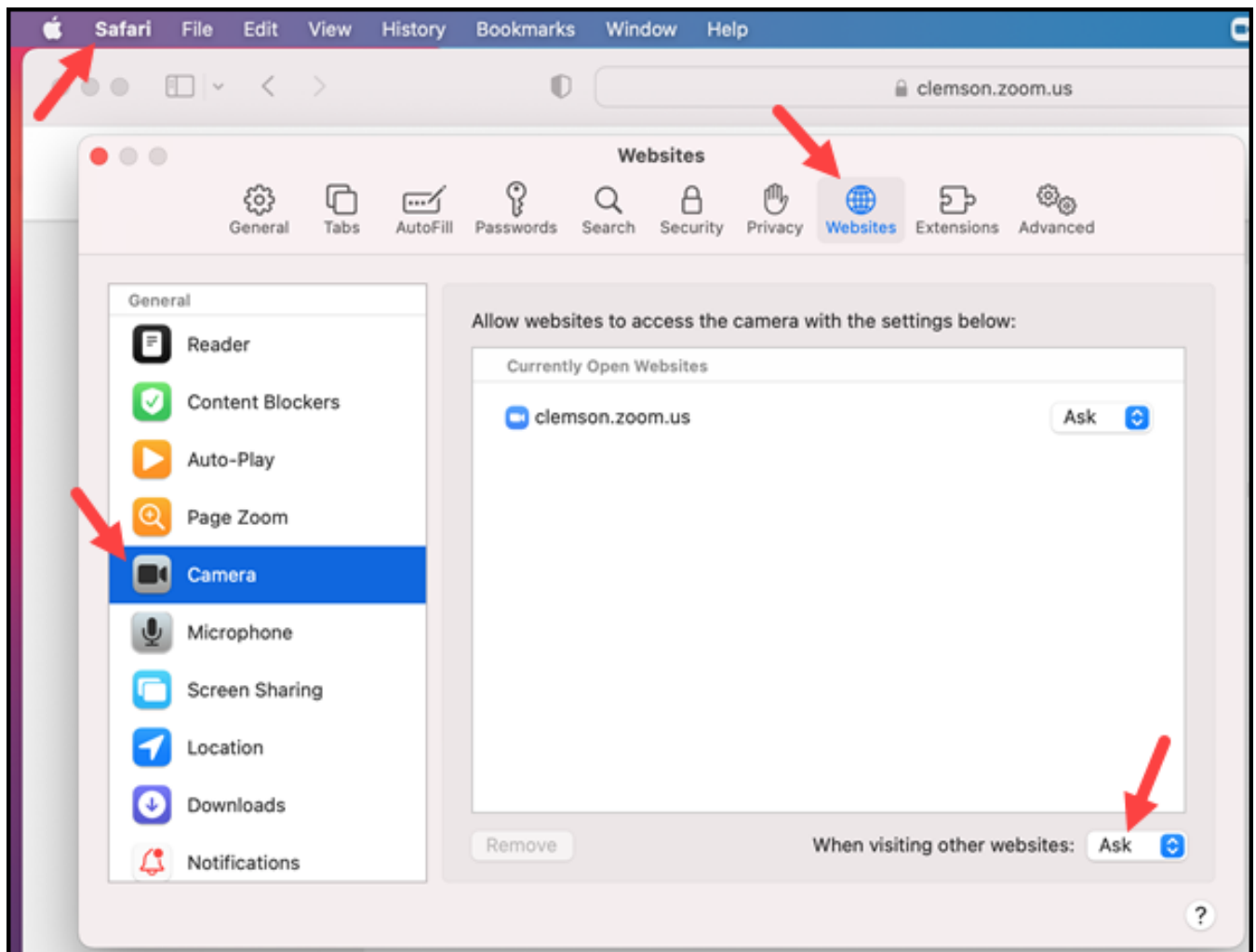
Here is a list of browser settings that might also be needed if accessing the camera from a browser:

SAFARI

Safari -> Preferences -> Websites -> Camera ->

If no site is listed ensure that **Ask** or **Allow** is selected with “When visiting other websites:”

If Respondus is listed select it and then click the **Remove** button.

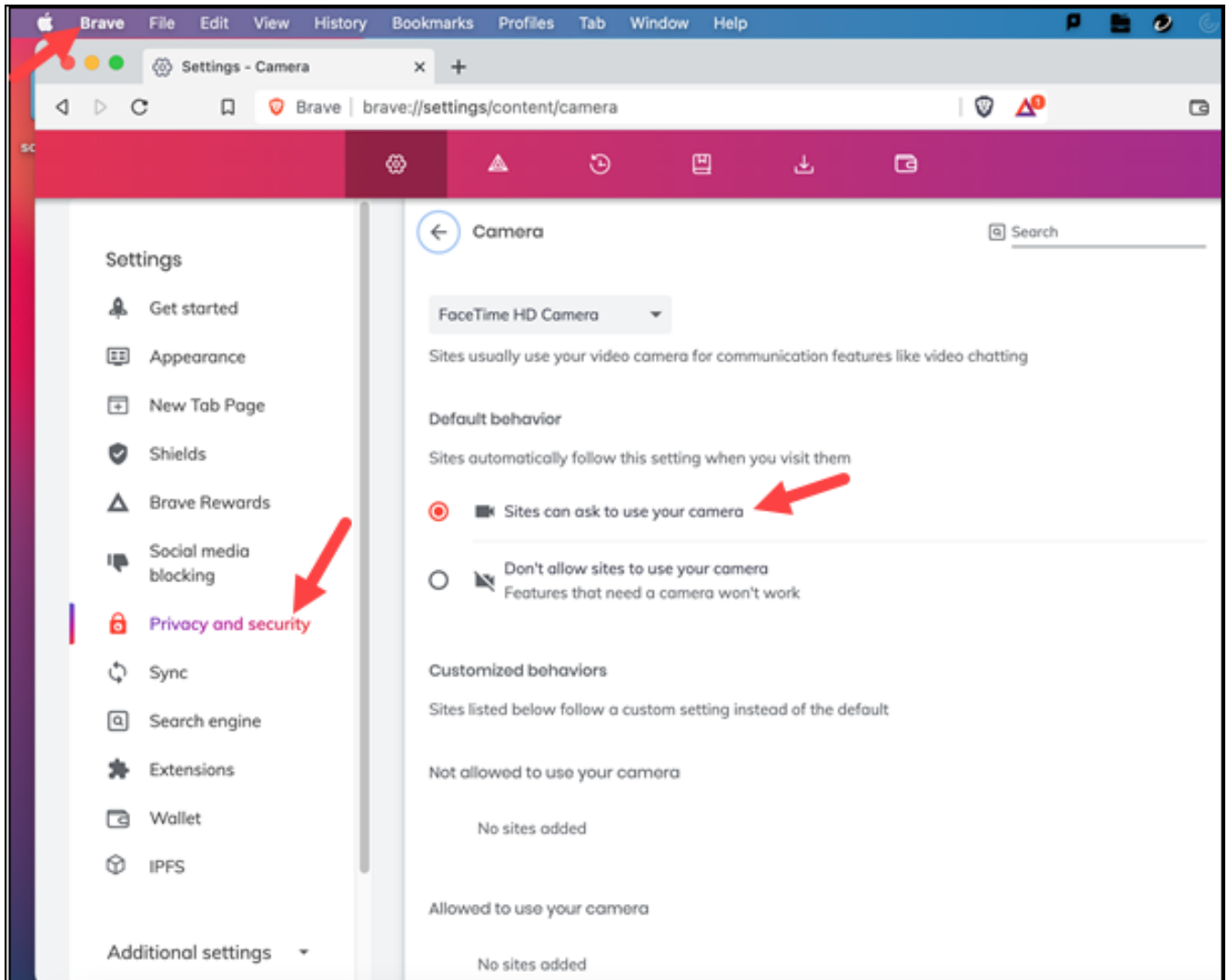


BRAVE

Brave -> Preferences -> Privacy and Security -> Site and Shields Settings -> Camera
-> Sites can ask to use your camera - **ON**

Block : No sites added

Allow: You should see <https://smc-service-cloud.respondus2.com:443> If you are getting an access denied message when Respondus attempts to access your camera you need to remove this site, access Respondus again and when you are asked whether to allow access you should allow.

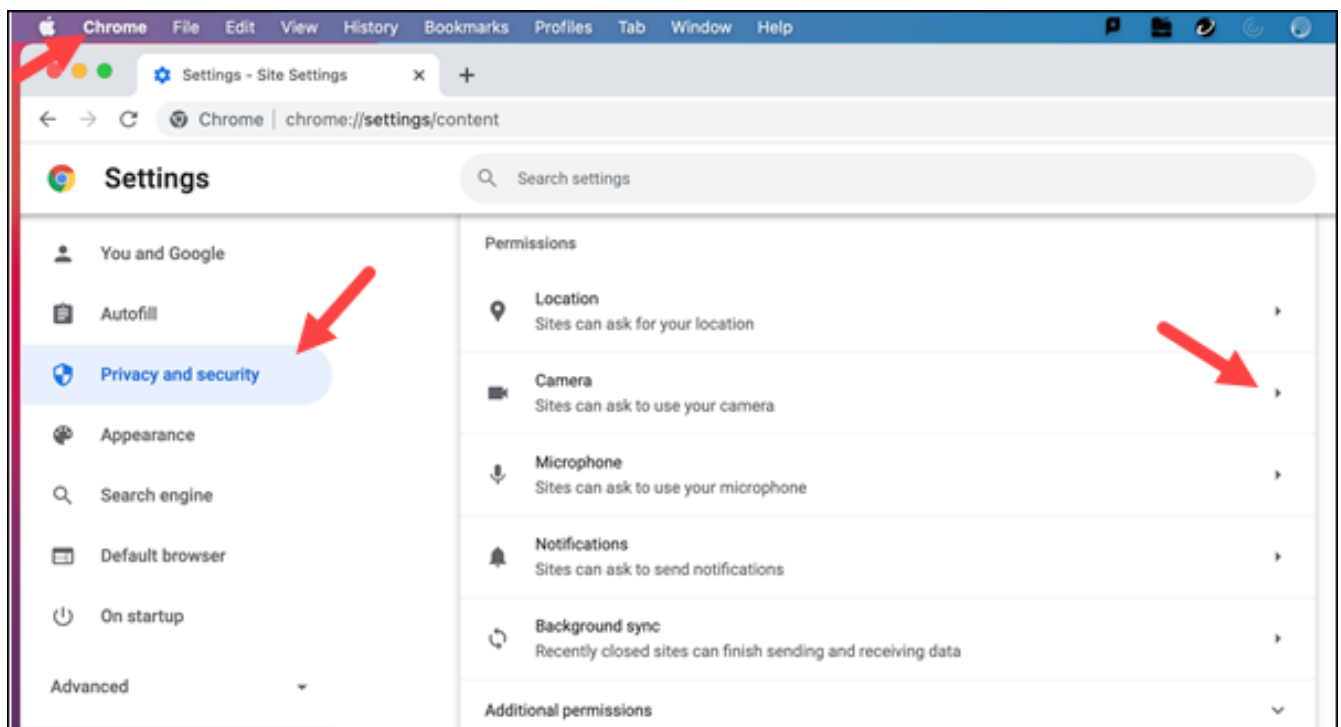


CHROME

Chrome -> Preferences -> Privacy and Security -> Site Settings -> Camera -> Sites can ask to your y our camera - ON

Block: Don't allow sites to use your camera

Allow: You should see <https://smc-service-cloud.respondus2.com:443> If you are getting an access denied message when Respondus attempts to access your camera you need to remove this site, access Respondus again and when you are asked whether to allow access you should allow.



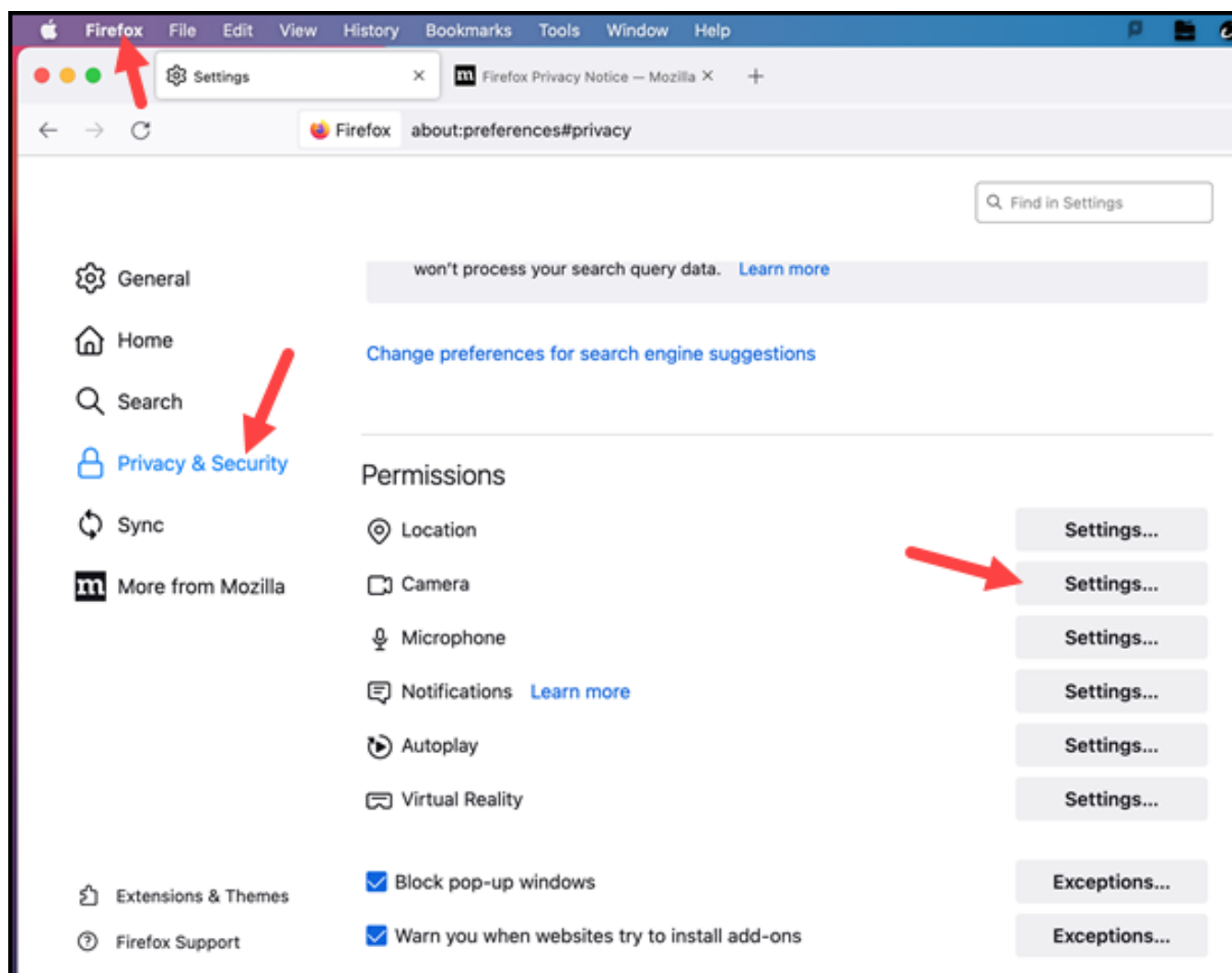
FIREFOX

Firefox -> Preferences -> Privacy and Security -> Scroll down to beside Camera and click Settings

If a website is listed it should also have the status of whether access is allowed or not. You can select and remove any or all websites that you do not normally use.

Ensure that “Block new requests asking to access your camera” is unchecked.

If you made any changes, click **Save**.



If you have more questions about this, email ITHELP@clemson.edu or call 864-656-3494.

Online URL: <https://hdkb.clemson.edu/phpkb/article.php?id=1879>