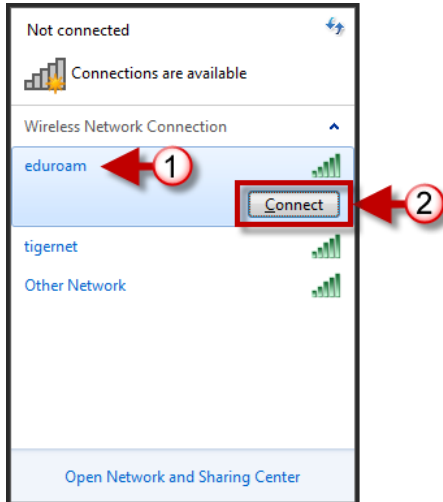


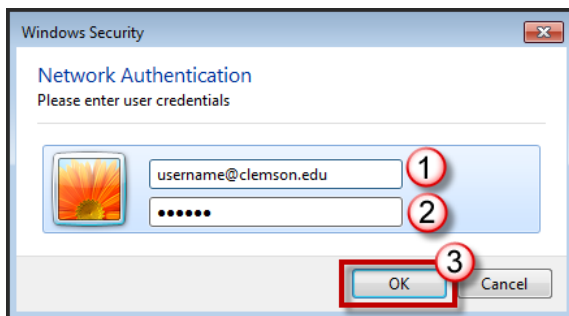
Windows 7 Simple Setup

Eduroam

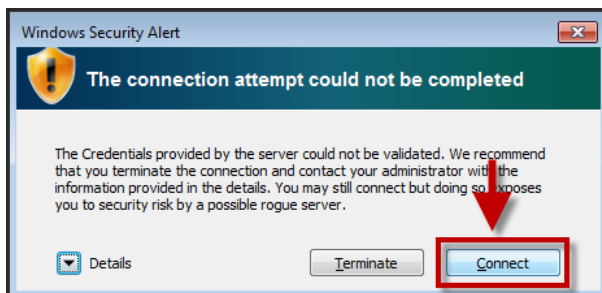
1. Click on the **Network** icon in the Windows taskbar.



2. Click the **eduroam** network.
3. Then click **Connect**.



4. The **Windows Security – Network Authentication** windows will appear.
5. Enter your **username@clemson.edu** and your network **password**.
6. Then click **OK**.



7. The **Windows Security Alert** will be displayed. Click **Connect**.